



IoT and Blockchain - A paradigm shift

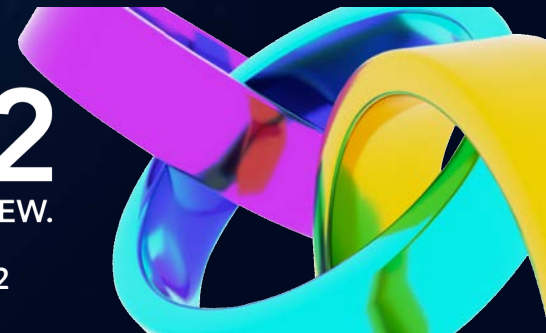
Yogesh Lulla

Vice President, Mobility, Voice & IOT

Console Connect by PCCW Global

IoT and Blockchain has the potential to change humanity:

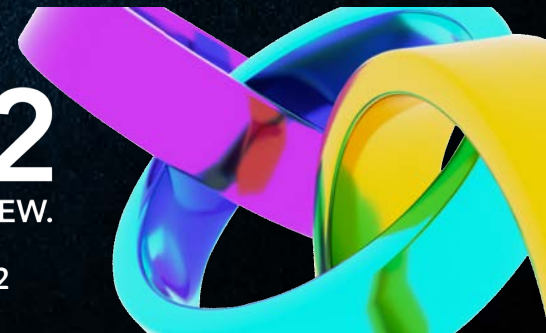
- Error proof data
- Empowering AI
- It is a journey with some challenges



TRUST

To start — A brief history of Trust:

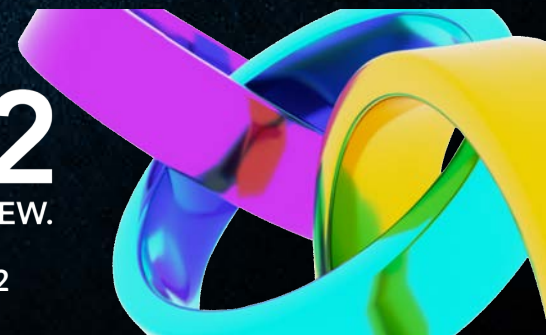
- Enables exchange of goods, services and ideas
- Determines outcomes
- Facilitates confidence



TRUST

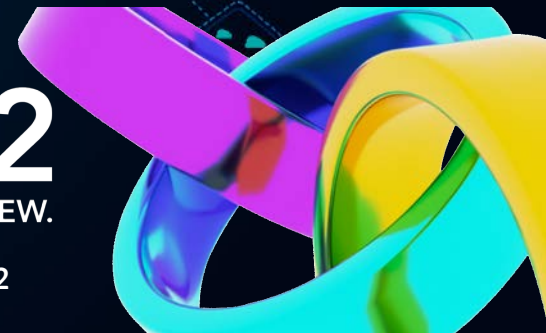
Blockchain enables Trust between people AND devices:

- Validation
- Certification
- Audit

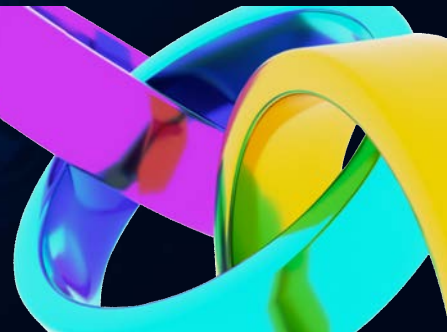


Economically Blockchain removes cost of market friction:

- Verification
- Networking
- Transactions and Settling

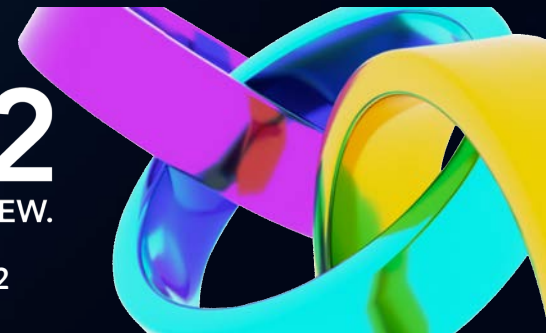


- Blockchain enables efficient verification of digital assets
- IoT's nature is to digitise real world attributes



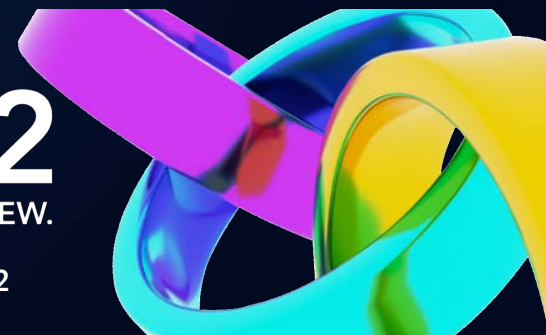


- IoT adds value to Blockchain and vice versa
- For example, Logistics: each step is measured by IoT and verified by Blockchain





- Blockchain enables Trust in IoT by validating the data life cycle
- As a system or a use case becomes more complex, so the Blockchain value increases



Not an easy journey, there are challenges:

- Ecosystem complexity
- Governance
- Technology scalability
- Human flexibility
- Economic models

viability



PACIFIC TELECOMMUNICATIONS COUNCIL

PTC'22
REUNITE. RETHINK. RENEW.

 @PTCouncil #PTC22



Artificial intelligence



Chatbot



Machine Learning



Cloud computing



Cryptocurrency



Robot Assistants



Block chain



Deep learning



Cyber security



Big Data



- Accurate decisions made by AI
- A converged approach is vital

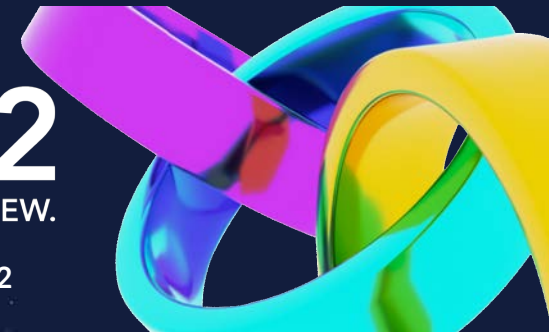
Security concerns for devices and information will continue to grow for IoT implementations. More specifically, it is likely that there will be new ambitious, specific and far reaching regulation from governments.



PACIFIC TELECOMMUNICATIONS COUNCIL

PTC'22
REUNITE. RETHINK. RENEW.

 @PTCouncil #PTC22



Who are we?

Console Connect by PCCW Global is the only automated interconnect platform available on the market today that can deliver connectivity on-demand across a Tier 1 global IP network.

Our truly global coverage combined with local on-the-ground knowledge has helped us build best-in-class global connections linking Africa, the Americas, Asia Pacific, Europe and the Middle East.

About PCCW Global:



Established the PCCW Global brand in 2005



Best in class connections across the globe linking Asia, Europe, the Americas, the Middle East and Africa



Acquired Gateway Communications, Crypteia Networks, Syntelligence and Voxclever, Console proprietary technologyConnect's advanced software platform and



57

Offices worldwide

35

Languages spoken



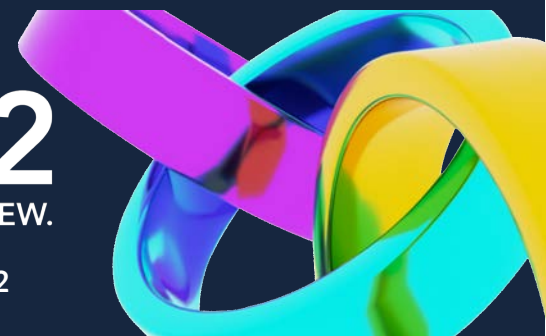
Leading provider of global telecommunications, offering the latest voice and data solutions to multinational enterprises and communication service providers



PACIFIC TELECOMMUNICATIONS COUNCIL

PTC'22
REUNITE. RETHINK. RENEW.

 @PTCouncil #PTC22



Ranked **Top 10** in international IP traffic in the world

Own fibre, satellite, media, mobile, IP, IoT(IPX) and SDO networks

Global mobile connectivity in more than **180 countries**

Edge devices are connected via our IPX to over **+1,000 MNOs and MVNOs**

When it comes to mission critical apps you need to be directly connected. PCCW Global's private MPLS network isolates traffic from the public internet and delivers the stringent privacy and security requirements required.



 @PTCouncil #PTC22

IoT

Global IoT connectivity from edge to cloud, all managed and orchestrated by our own SDN.

From real-time activation and deactivation of devices through to service configuration and traffic monitoring, our platform provides end-to-end control and visibility over your global IoT assets.



Availability:

Devices work with our physical or eSIM anywhere in the world (through 800+ global roaming partners and our own extensive MPLS network).



Simplicity:

An intuitive self-service portal that allows you to manage SIM cards and connection.



Security:

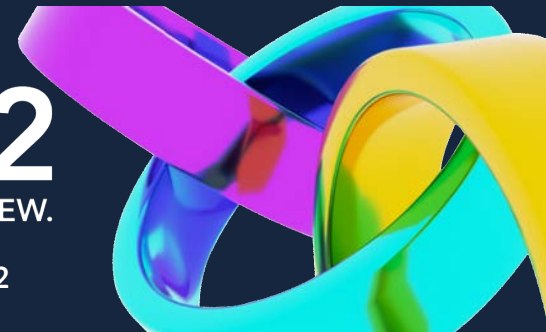
Secure and compliant to GSMA standards.



PACIFIC TELECOMMUNICATIONS COUNCIL

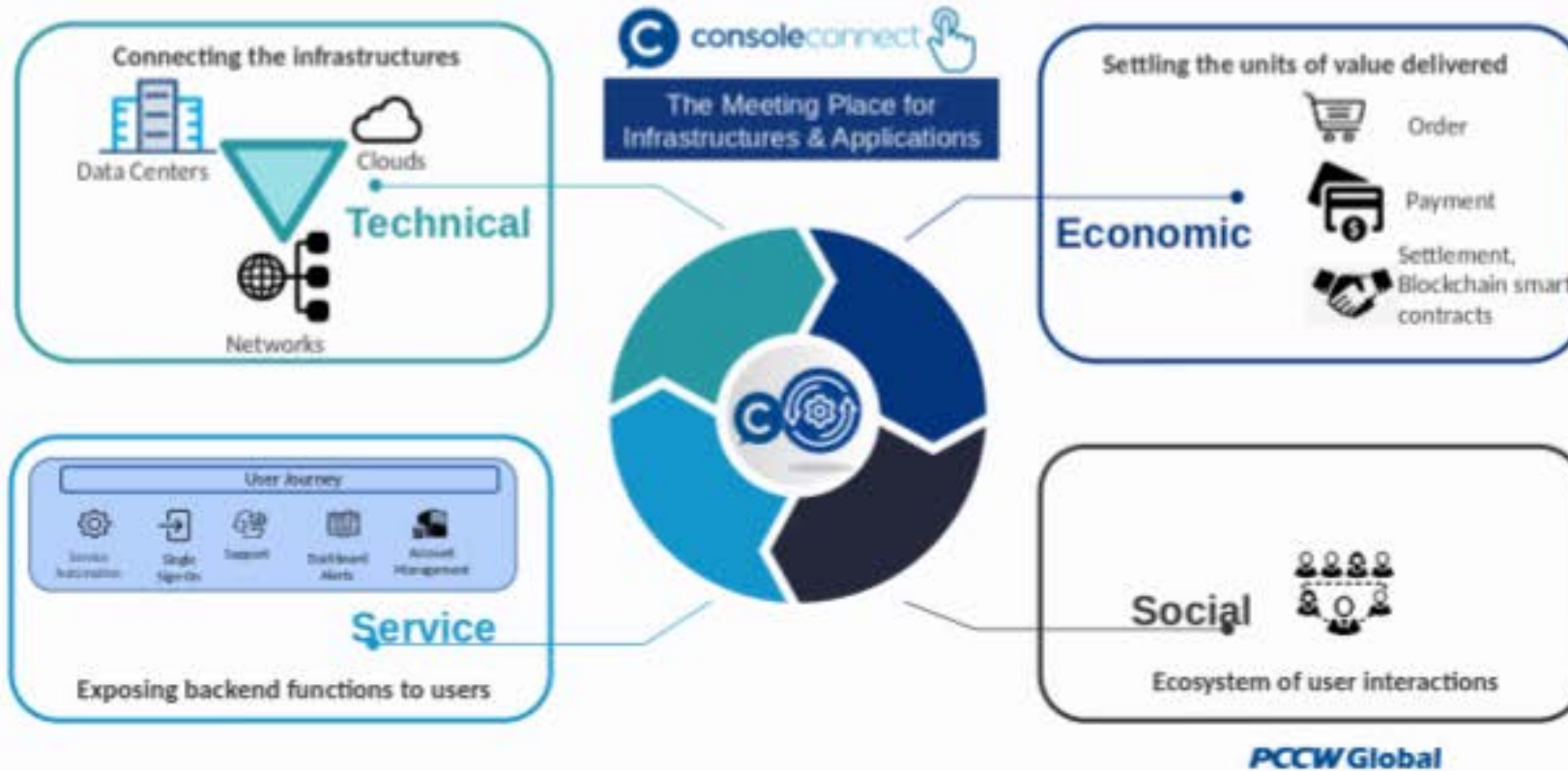
PTC'22
REUNITE. RETHINK. RENEW.

 @PTCouncil #PTC22





Transformation Enabler – Platform Functions & Values



PACIFIC TELECOMMUNICATIONS COUNCIL

PTC'22
REUNITE.RETHINK.RENEW.

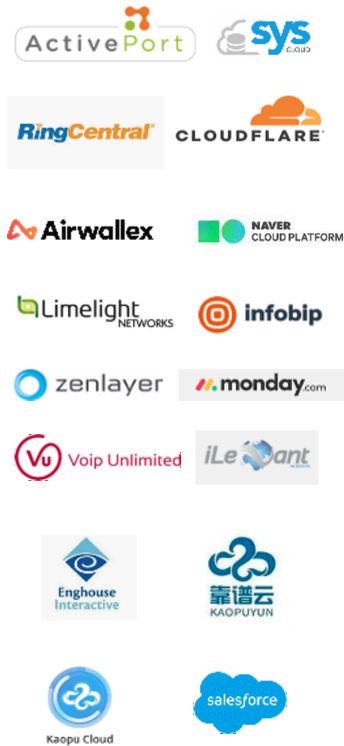
@PTCouncil #PTC22



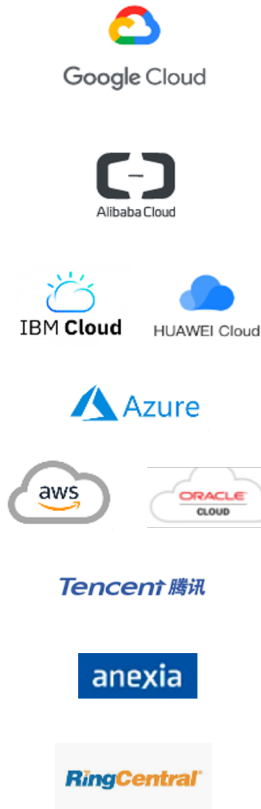
Who is on Console Connect?

Example customers and partners from across our growing Console Connect community.

XaaS & Applications



Cloud provider



Data Centre



Internet Exchange



Carrier / NSP



Enterprise



Thank you

