

Delivering Fiber Broadband in Nepal with FTTH

Dileep Agrawal

Chairman / Managing Director

WorldLink Communications Ltd

Nepal

PTC 2023

January 2023



NEPAL

Fast Facts



Population:
30 million



Household:
6.6 million



Literacy:
67.91%



GNI - Per Capita
(PPP): \$4,280



GDP Growth:
5.8%



Internet Penetration:
Mobile 98.46%
Fixed 36%



Federal
Democratic
Republic in 2008



Land locked and geographically diverse



FTTH in Nepal: Current Status



- **2.1 million FTTH connections**
 - 94% of all fixed broadband connections
 - 32% of all households
- **Growth contributors:**
 - Easy right of way (ROW) permits
 - Low regulation
 - Surge in demand for data
 - Drop in cost of fiber cable and ONTs
 - Affordable (ARPU: ~USD 8 per month)
- **Worldlink has built the largest FTTH network with 2.1 million home passes serving 700,000 households**

WorldLink In Brief

Nirmal Purja

Mountaineer, 14 peaks
"Nothing is Impossible"



Brand Ambassador



Established in
1995



Nepal's 3rd Largest
Operator by
Revenue



Largest Fixed
Broadband
Operator



Largest IPTV &
Content Service
provider



Largest Public
Wi-Fi Operator



ISO 9001:2016
certified



British
International
Investment
(BII, formerly CDC)



Vision:
Connect everyone
anywhere all the time



Mission:
Enrich Lives through
Connectivity

WorldLink At Present

CELEBRATING
27 YEARS
1995 - 2022
ANNIVERSARY



Internet Users:
3.6 Million



**Fixed Broadband
Connection:**
700,000



Employee: 5,500



Revenue:
USD 75 Million



**IPTV
Subscribers:**
400,000



**Public Wi-Fi
Locations : 16,000
Daily Visitors:
600,000**



**Enterprise
Customers: 4100**



**Traffic:
3 Tbps**



**Network
Coverage:
74 Districts out
of 77**



Market Share:
31% Fixed Broadband
35% of Nepal's Internet traffic



**Award:
National ICT
Award 2019**

OUR CSR PLAN FY23 : 4 out of 17 SDGs



WorldLink's Fiber Infrastructure

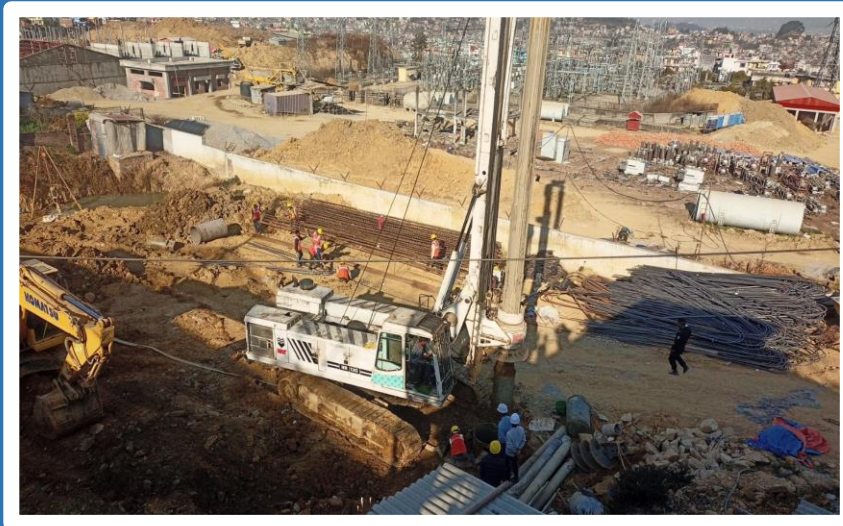


	As on 12 th Jan 2023
Home Passes (ports)	2,048,222
Districts Covered	73 out of 77
No. of OLTs	602
Fiber deployed (in km)	
Intra City	48,000 (100% owned)
Inter City	1,633 (owned) & 2,165 (Leased)
Customers (Active Connections)	
Retail Broadband	727,122
Enterprise Circuits	3,000
IPTV Set-Top Boxes (STBs)	487,887
Wi-Fi Hotspots	14,260

Data Center (under construction)

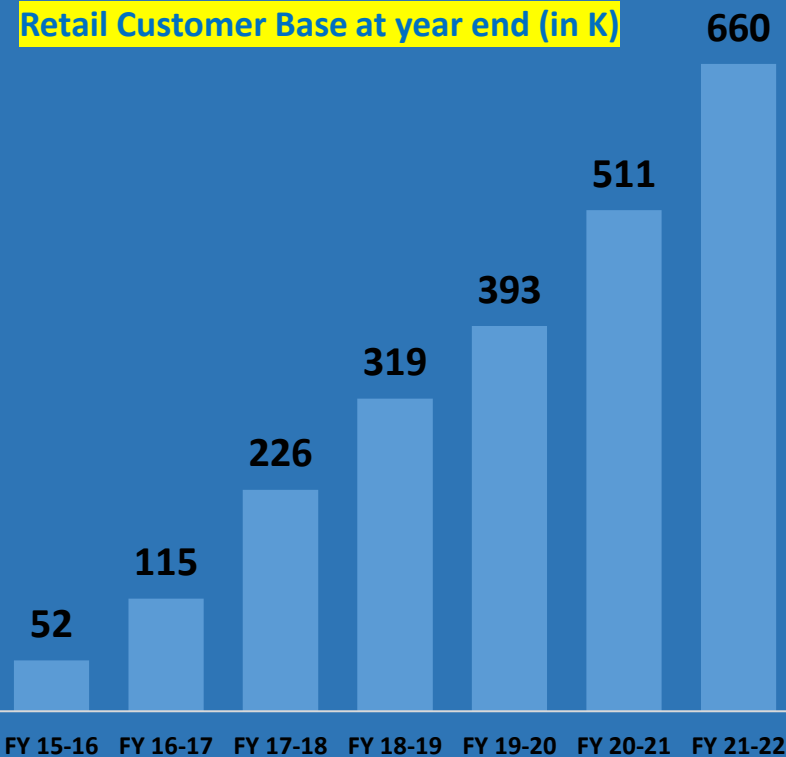


- Site Location: Mata Tirtha, Kathmandu, Nepal
- Type : Core DC, Carrier Neutral
- Certifications: Uptime Tier 3 , Edge (Climate)
- Rack Count: 366
- Power: 3MW
- Cooling: DX based with Free Cooling
- Budget: USD ~15 Million
- Status: Under Civil Construction
- Design Consultant: Nextra by Airtel
- Plans to build 12 other DCs

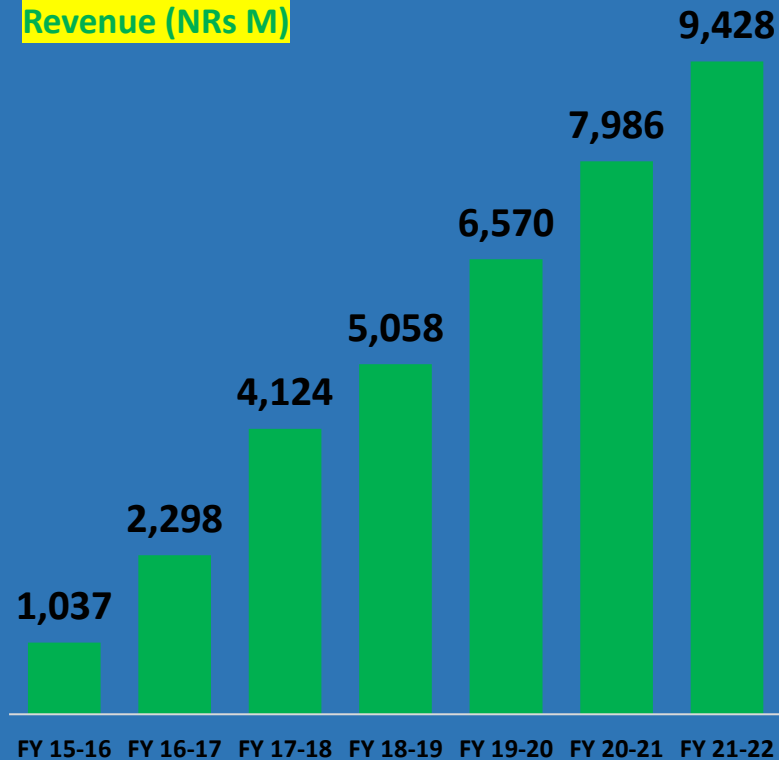


Financial Performance

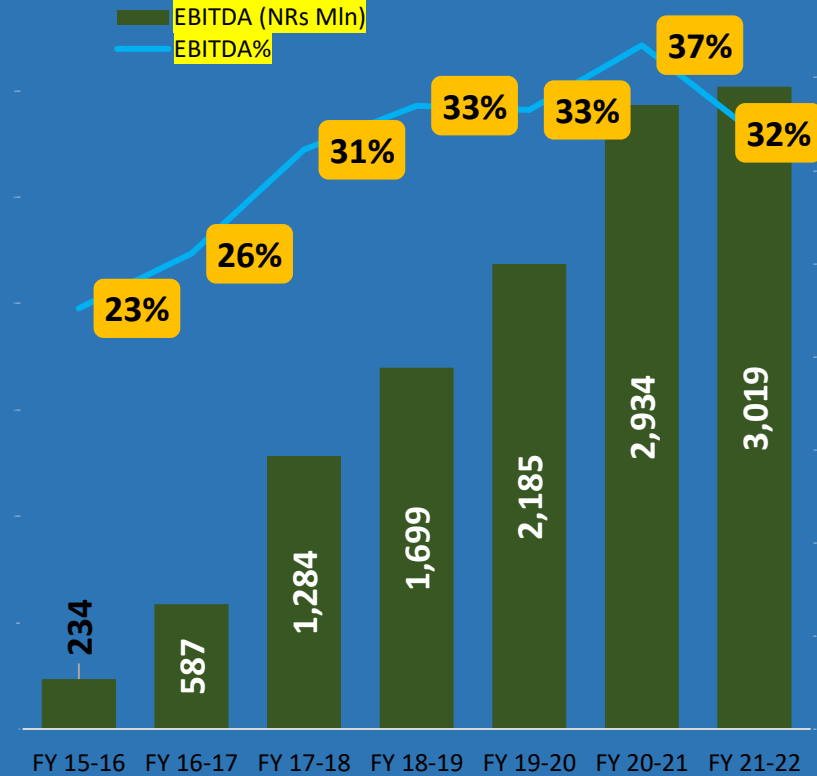
Retail Customer Base at year end (in K)



Revenue (NRs M)



EBITDA (NRs Mln)
EBITDA%



Rural Broadband: Karnali Province



Thank You !!

