



BRIDGING THE DIGITAL DIVIDE OF REGIONAL AUSTRALIA

Chris Thorpe, CEO and Founder
LEADING EDGE DATA CENTRES

1600-1610



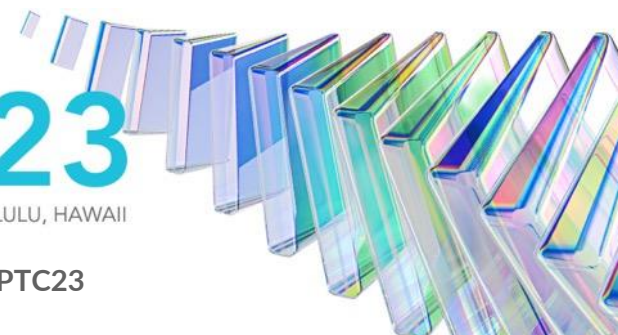
PACIFIC TELECOMMUNICATIONS COUNCIL

PTC'23

15-18 JANUARY 2023 | HONOLULU, HAWAII



@PTCouncil #PTC23





Challenges at Australia's Edge

High Latency

Poor Resilience

Minimal Choice

Inability to Innovate



Solving the Problem

LEDC Locations and Network

An inter-connected network between centres, relieving the pressure from the metropolitan network.

Phase 1: NSW – 2021-2022

Phase 2 : VIC – 2023

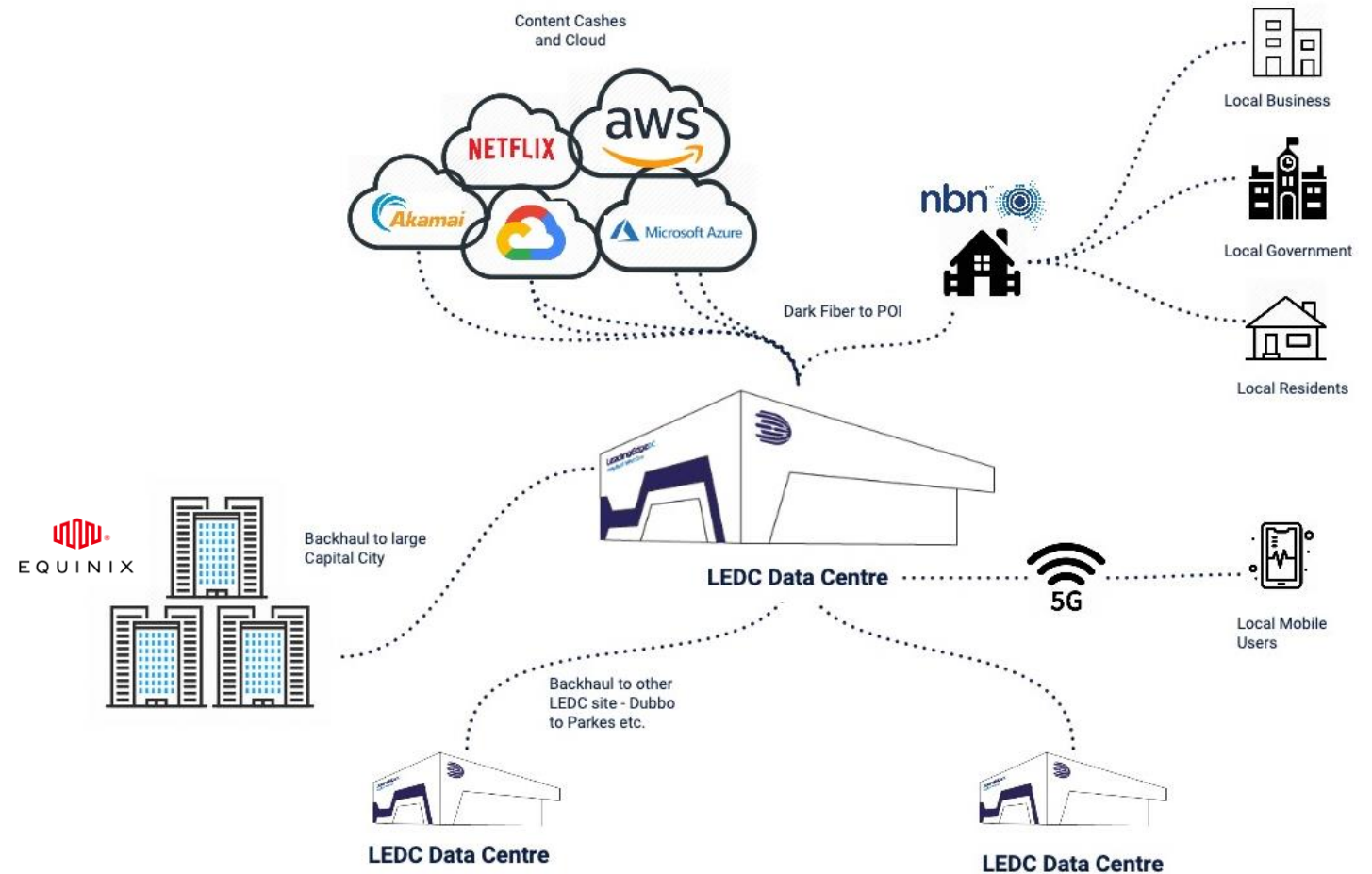
Phase 3 : QLD – 2023-2024

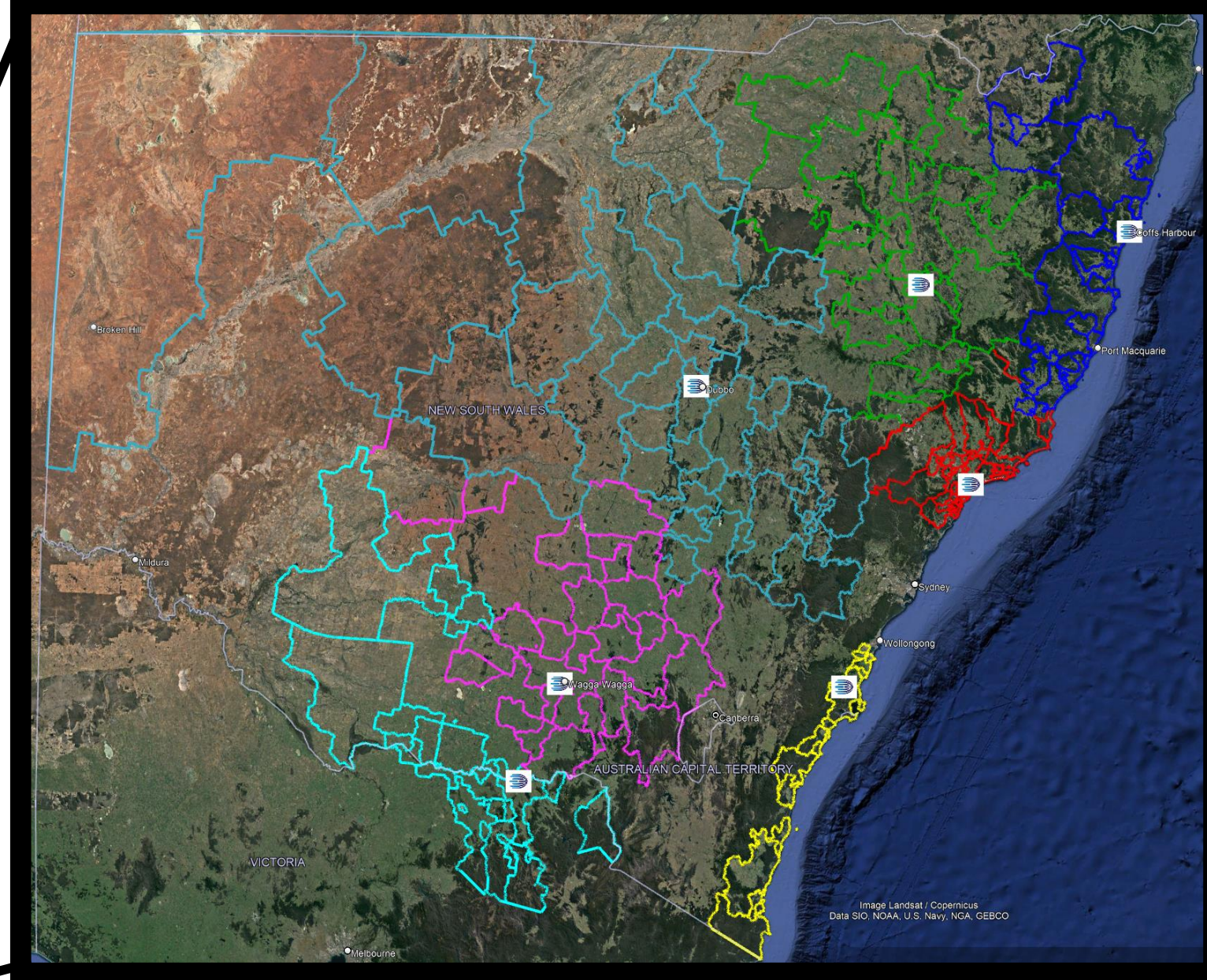
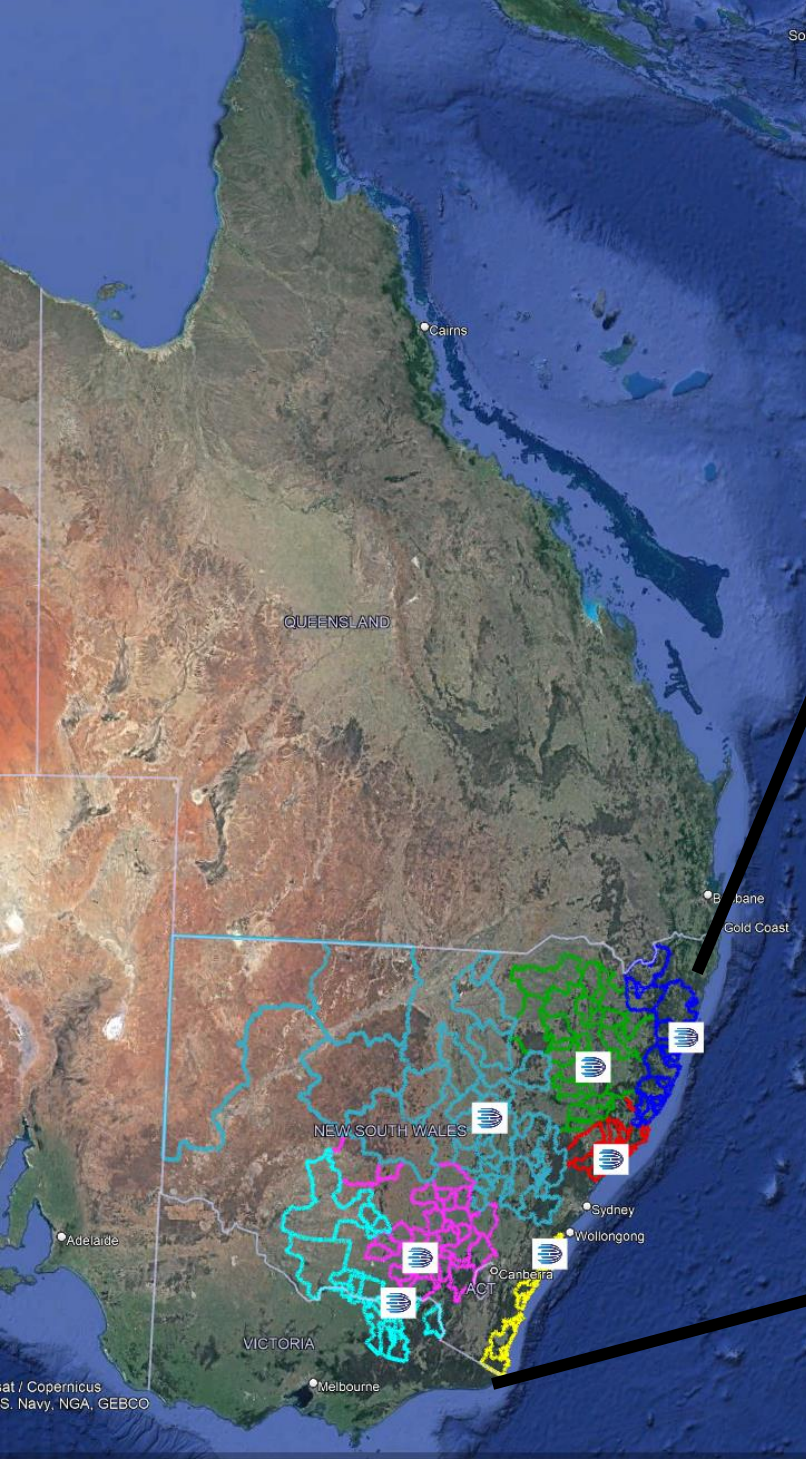


Connecting Regional Australians Directly into our Ecosystem

Keeping local data local.

- Each LEDC data centre aims to be located within 5kms of the NBN Point of Interconnect (POI).
- LEDC owned dark fibre builds from the data centre to the POI allows for local content hosting and peering in the data centre. This dramatically improves internet performance in the regional towns and reduces the costs for RSPs.
- Local distribution of content.





Extensive Regional Coverage



LEDC Providing the Critical Infrastructure Solution for Regional Australia

- Solving the Core Problems
- Bridging the Digital Divide
- Population Migration



Follow us on LinkedIn



PACIFIC TELECOMMUNICATIONS COUNCIL

