

CONNECTING TOMORROW, TRANSFORMING AND ADAPTING TELECOM INTO THE DIGITAL AGE

DXN Cable Landing Station - Pacific Updates

Presented By: Shalini Lagrutta, CEO

PITA | January 2024

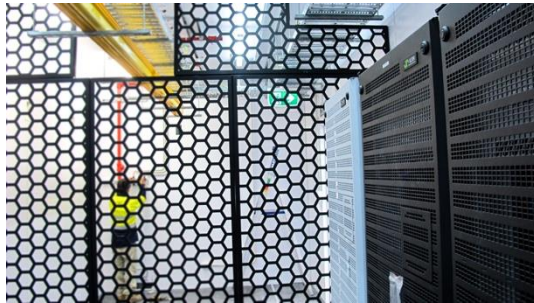


BSCC PALAU CLS

KEY CALLOUTS FROM PROJECT:

- SPEED
- QUALITY
- CO-ORDINATION WITH CIVILS ON SITE

BSCC Palau CLS



Solution Specification:

- CLS design to withstand Cat 5 rating and zone 4 seismic rating
- 2N redundancy on DC system with 4 hours backup each leg at 20kW load (total 8 hours backup)
- Optional 50kW AC UPS with 30 minutes backup
- Mains power supply 220V / 110V
- Precision Cooling for equipment room in N+1 redundancy
- Fire detection & Novec 1230 gas suppression system
- Security camera and card access control system
- Building Management system
- IT load for NEC PC2 Technical is 18.3kW DC load and 1.9kW AC load
- IT load for TPN Room is 47kW AC load
- Total 67.2kW IT load

BSCC Palau CLS



BSCC Palau CLS



Timor-Leste South Submarine Cable (TLSSC) Project

KEY CALLOUTS FROM PROJECT: NEW PROJECT INVOLVING COLLABORATION WITH MULTIPLE STAKHOLDER – OUR FOCUS, ENSURING SMOOTH IMPLEMENTATION



Overview

- Establishes submarine cable connection
- Connects Díli (Timor-Leste) to NWCS (Darwin to Port Hedland)

Objectives

- Establish a reliable submarine cable link
- Strengthen telecommunication infrastructure

Significance

- Facilitates high-speed data transmission
- Boosts economic and social development

Milestones

1. Project Initiation
2. Cable Installation
3. Integration with NWCS
4. Testing and Optimization
5. Project Completion



**No Deployment
Infrastructure**

1



**Lead Time to
Deployment**

2



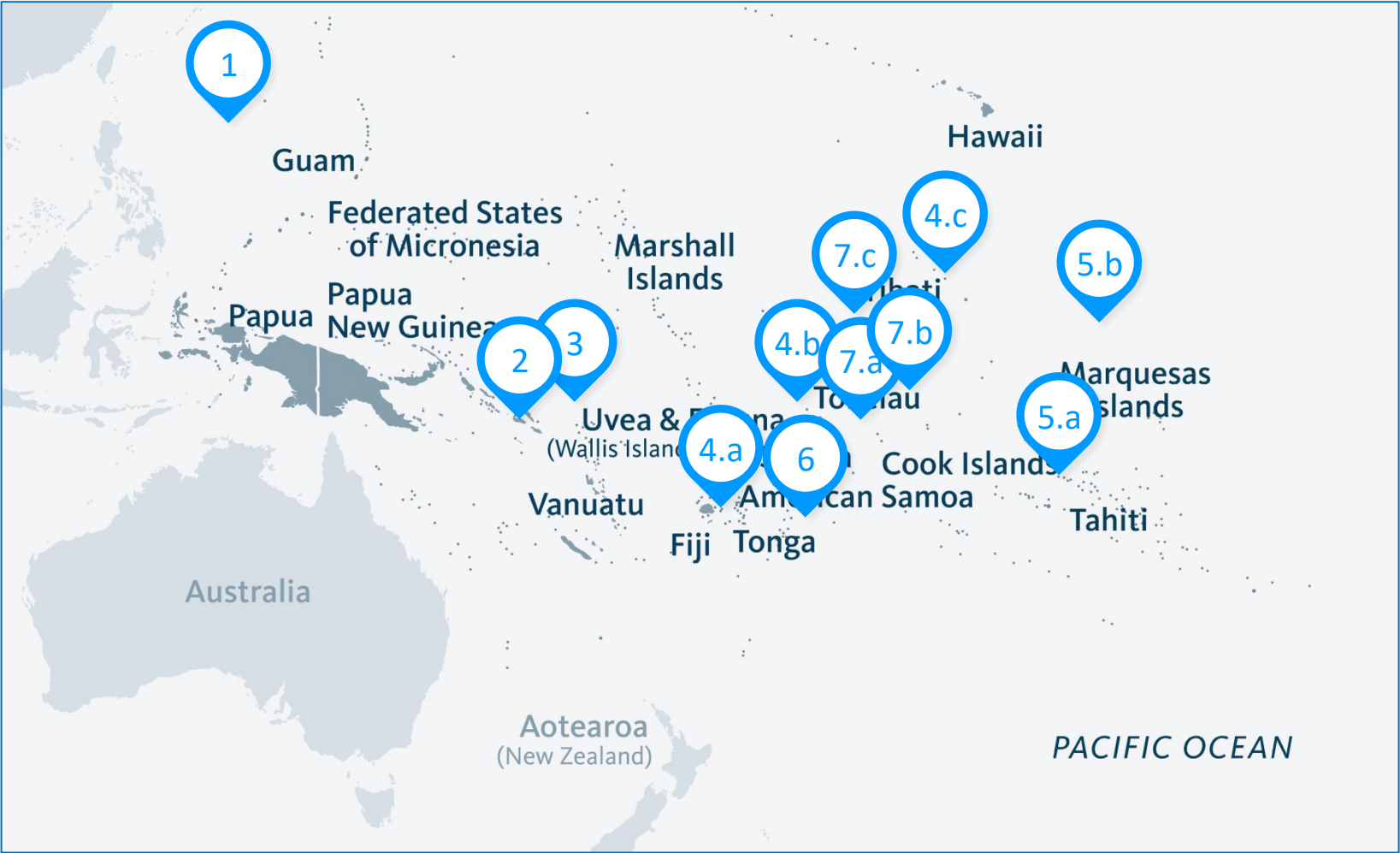
**Shipping & Supply
Chain issues**

3

MAJOR CHALLENGES AND LEARNINGS

DXN'S PACIFIC DEPLOYMENTS

Innovative design, high quality manufacturing and rapid deployment have been the key to our success in the region



1	BSCC
2	SISCC
3	SES Networks
4.a	Southern Cross Cable Network Savu savu-Fiji
4.b	Southern Cross Cable Network Nukunonu-Tokelau
4.c	Southern Cross Cable Network Kiritimati-Kiribati & Apia-Samoa
5.a	Avaroa Cable Limited Rarotonga
5.b	Avaroa Cable Limited Aitutaki
6	Telcom Niue
7.a	Teletok Fakaofu
7.b	Teletok Nukunonu
7.c	Teletok Atafu

DXN LIMITED: INFRASTRUCTURE AT THE EDGE

Modular Data Centers and Cable Landing Stations

We are the exclusive vertically integrated manufacturer and operator of modular data centers and prefabricated cable landing stations in the Asia Pacific.

Expertise in Edge Infrastructure

Our skill set encompasses designing, engineering, manufacturing, and maintaining specialized edge infrastructure, including Prefabricated Data Centers and Cable Landing Stations.



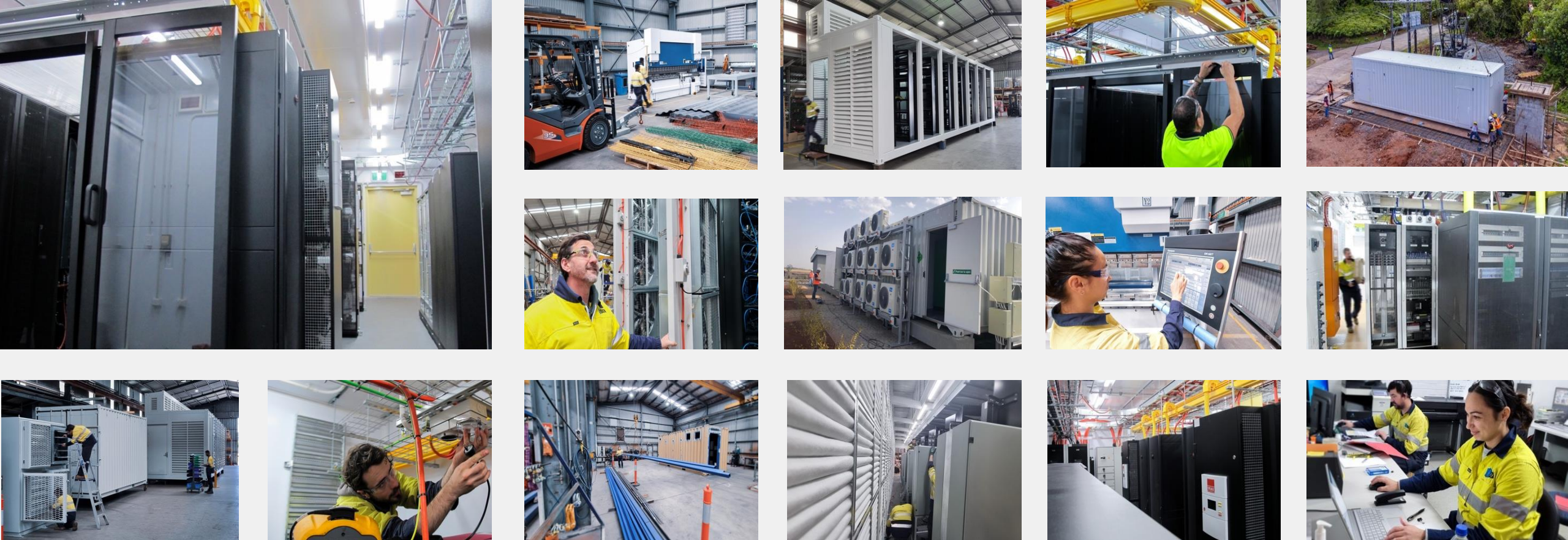
Modular Division

This division is dedicated to the design, engineering, manufacturing, and deployment of edge facilities and critical data center infrastructure.



Data Center Operations

Our operations division is focused on operating, maintaining, and marketing data centers and critical infrastructure for both our existing data centers and modular customers.



THANK YOU